



LED LIGHT KIT

WILL FIT *E-Z-GO® T48®

INSTALLATION INSTRUCTIONS

KIT CONTENTS:

LED Headlights
LED Tail Lights
Upgrade Harness
Mounting Screws
Zip Ties
Light Switch

TOOLS NEEDED:

#2 Phillips Tip
Cutting Tool
Sandpaper
Power Drill
15/32" Drill Bit
Marking Pen
Scissors
Tape
Safety Glasses

LED Headlights



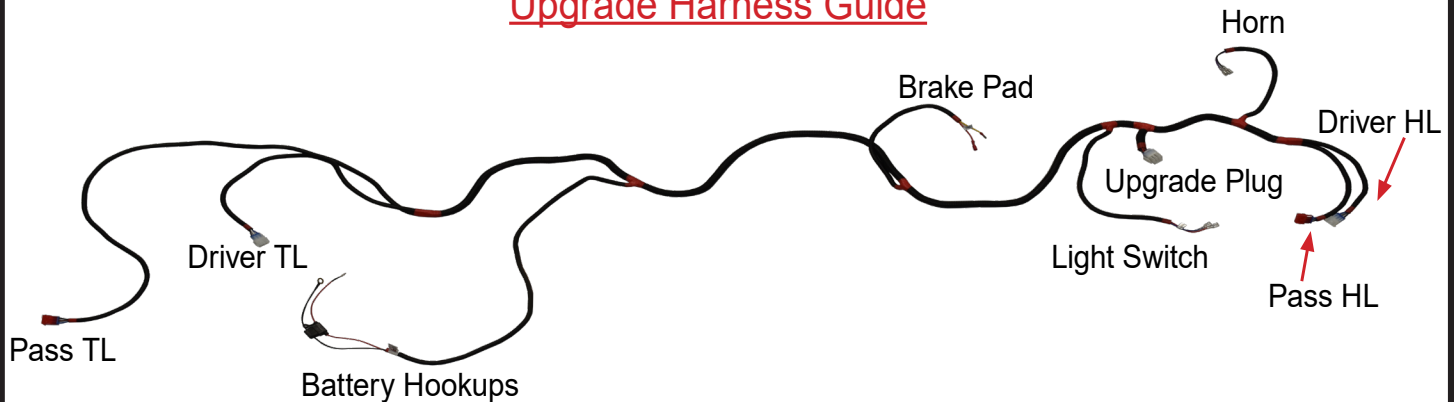
LED Tail Lights


Light Switch



Upgrade Harness

Upgrade Harness Guide



 Scissors & Tape

Engage Parking Brake and turn key to the OFF position. Cut out tail light template and place it against cart using the body lines and notes on template for alignment.

Draw the inside of the template out with a marking pen. ***Flip template over for opposite side.**




 15/32" Drill Bit, Safety Glasses, & Rotary Cutting Tool

Drill a pilot hole so you will have a starting point to begin cutting.

Cut out the light area of the body starting at the pilot hole. Use sandpaper to clean edges.




 #2 Phillips Tip

Place **Tail Light** into the rear of the vehicle. Secure tail light using supplied screws.

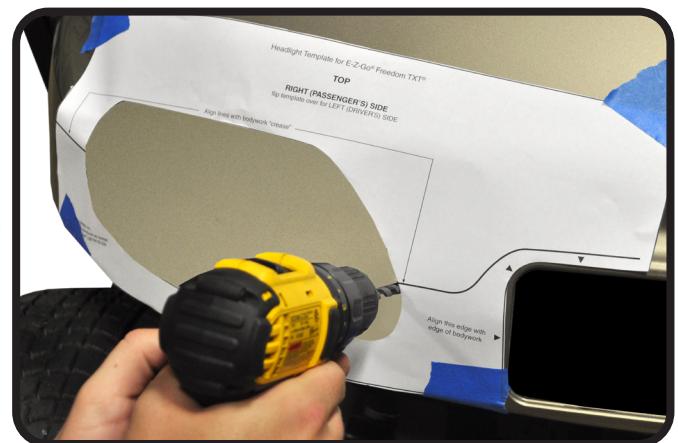
***Repeat steps 1-3 on opposite side.**
NOTE: Red 3 pin Connector's are for passenger side lights.



 15/32" Drill Bit, Scissors, & Tape

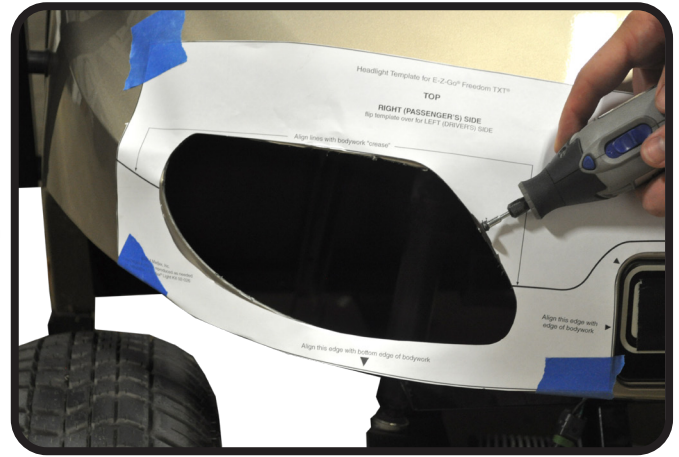
Place headlight template against cart using the body lines for alignment. Draw the inside of the template out with a marking pen. Drill a pilot hole on the inside of template line.

***Flip template over for opposite side.**



 Safety Glasses & Rotary Cutting Tool

Using a cutting tool, cut out the shape of the headlight. Use sandpaper to clean edges.



Insert **LED Headlights** into cowl and attach to car using clips located behind the headlight. Ensure the headlight mounting clips engage behind cowl.



Repeat Steps 4-6 on opposite side.

Run wire harness down the Driver's side of the frame so it doesn't hang. Wait to secure with wire ties until after final step.

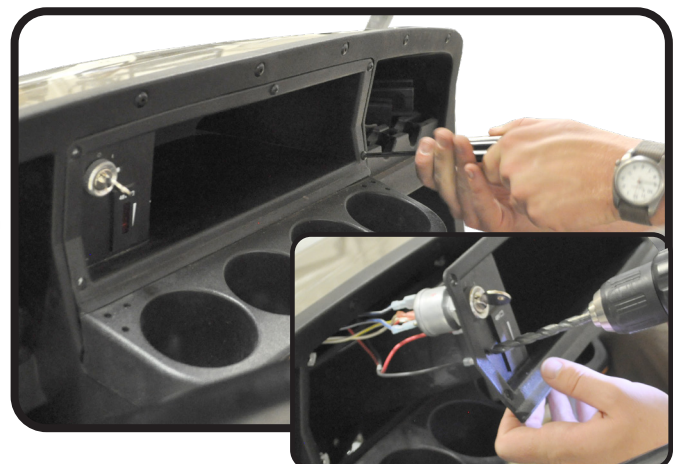


Secure wire harness in the battery compartment. Route tail light wires to rear of cart. *Red connector to Passenger side.

 15/32" Drill Bit

Temporarily remove dash panel.

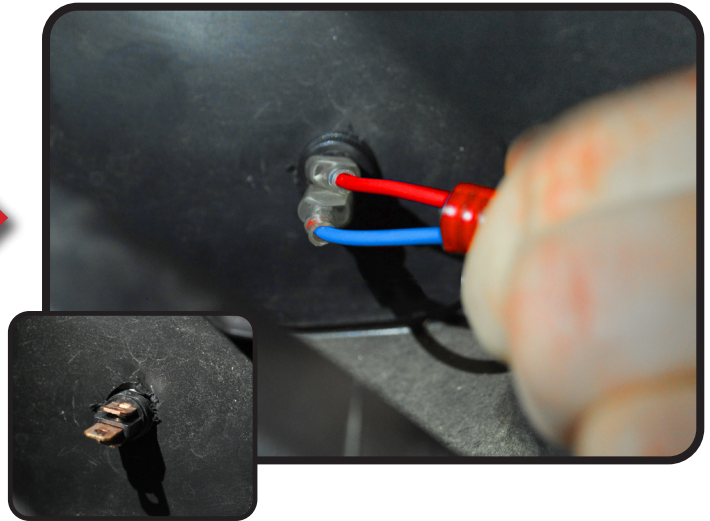
Using a 15/32" bit, drill out the hole for the **Light Switch** at your desired location.



***Check before drilling and ensure mounting location is free of obstacles.**

Secure switch with ring nut from back of switch to dash panel.

Attach Blue and Red wires to male spade terminals on **Light Switch**, there is no orientation for wire connections.



Attach headlight and tail light 3 pin connectors to the GTW wire harness 3 pin connectors.

*Red 3 pin Connector's are for passenger side lights.

Battery Pack Connections

IMPORTANT: This light kit is designed for 12V power. A 48-12v or 16-12 voltage reducer will be needed if no 12v power is available. Follow your reducer instructions for proper installation.

Connect the wiring harness to one battery's positive connection and another battery's negative connection as shown. Be sure the two batteries used are directly linked to together and not to the main battery pack terminals.



CAUTION: THIS LIGHT KIT IS A 12V SYSTEM. SUPPLYING MORE THAN 12V TO THE SYSTEM WILL DAMAGE THE LIGHT KIT AND VOID YOUR WARRANTY.

INSTALLATION COMPLETE