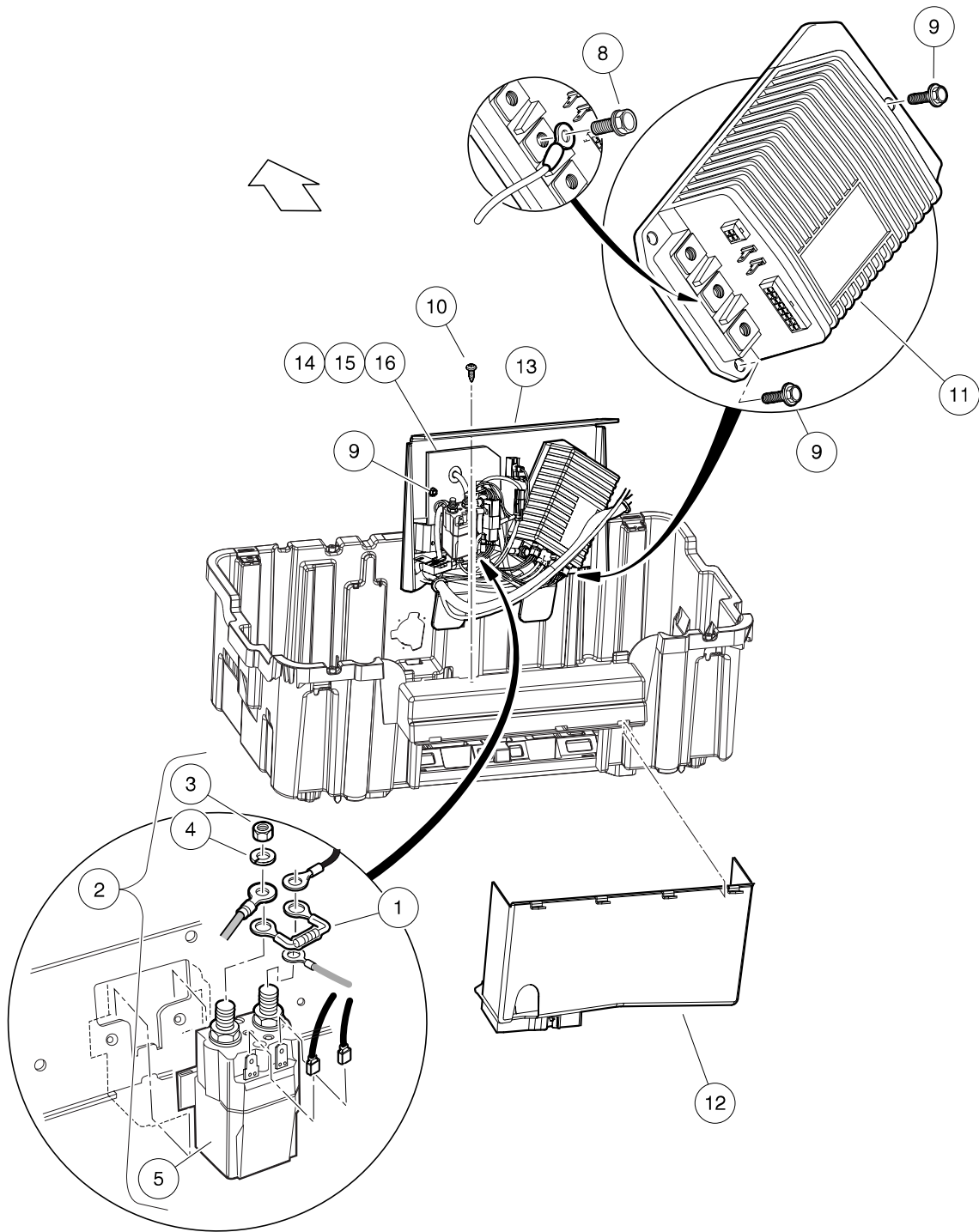


12

E



000486-010

COMPUTER, CONTROLLER, AND SOLENOID – IQ SYSTEM

ITEM	PART NO.	DESCRIPTION	QTY
		1 2 3 4	
1	1014947	Resistor Assembly	1
2	101908701	Solenoid, 48-Volt (includes items 3 through 7)	1
3	1012528	Nut, M8-1.25 Hex	2
4	1013734	Lockwasher, 8mm Split	2
5	N/A	Solenoid, 48-Volt	1
6	N/A	Washer, Lock	2
7	N/A	Nut	2
8	102240501	Bolt, Controller, Terminal	3
9	102296716	Screw, M6 X 16 Tt Hx Fl Hd	11
10	102298020	Screw, K80x20, Torx Pn Hd Pt	1
11	102806201	Controller, IQ, 48-volt	1
12	103367901	Shield - Controller	1
13	103639401	Component Mounting Plate, Cast	1
14	103697002	Obc, Prec V5.0 8v, A1, #4	1
15	103702603	Obc, Prec V5.0 8v/12v, A2, 6 Ga. Wire	1
16	103702604	Obc, Prec V5.0 8v/12v, A2, 4 Ga. Wire	1
		<p>Note: Item 14 must be used with Crown, and JCI brand batteries. Items 15 and 16 must be used with US Battery brand batteries.</p>	

12

E