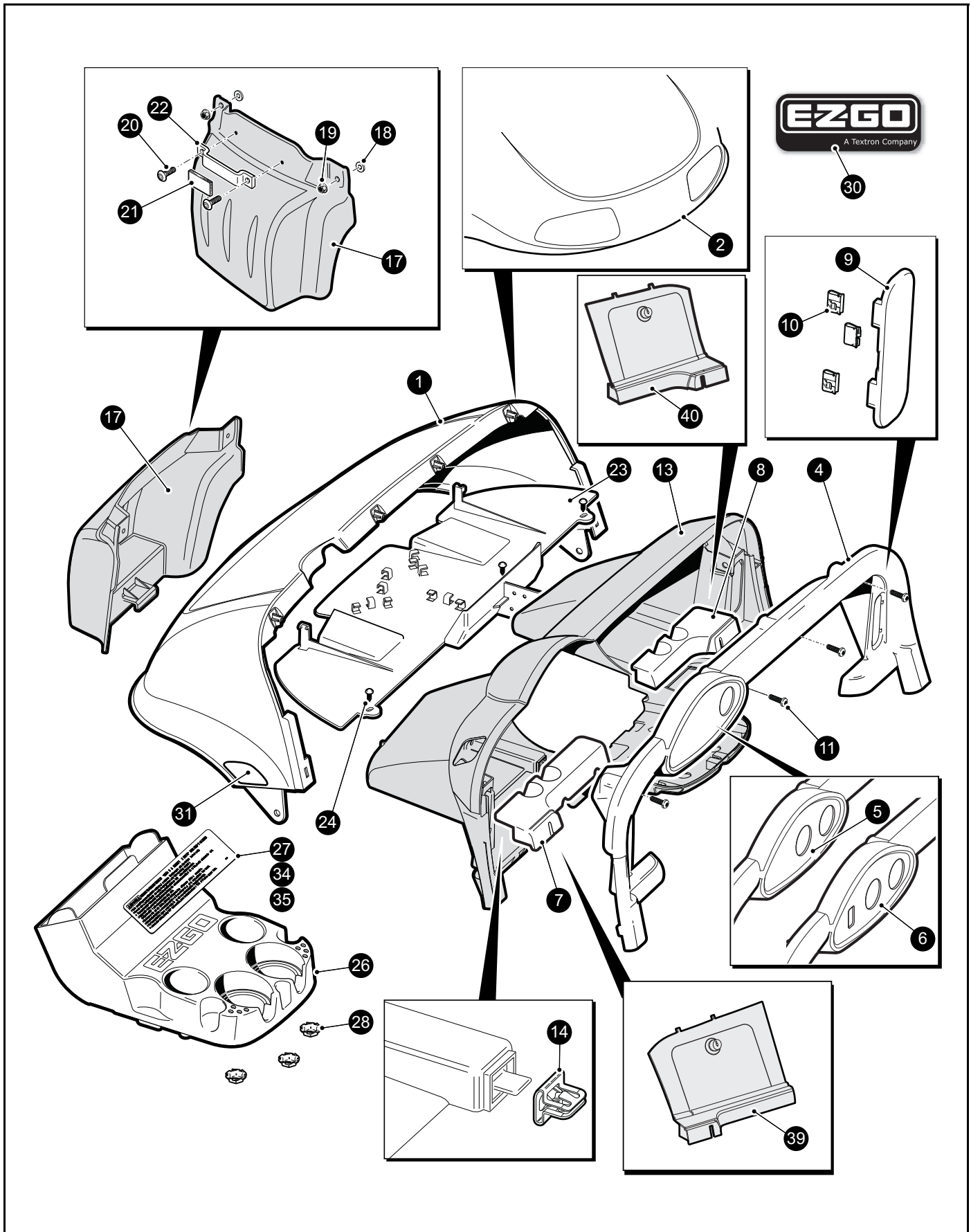


# BODY



When ordering parts, please specify the model and serial number of the product.

\* Indicates a component that is not available as an individual part.

\*\*\* Indicates consult Customer Service Department for additional information.

ITEM	PART NO.	1 2 3 4 5	DESCRIPTION	QTY.
1	6XXXXX***		FRONT COWL, WITHOUT HEADLIGH OPENING (see colors below) ..... 606953 .... IVORY 606954 .... FORREST GREEN 606955 .... PATRIOT BLUE 606956 .... BLACK 606957 .... MOLTEN RED 606958 .... BRIGHT WHITE 606959 .... FLAME RED 606960 .... STEEL BLUE 608476 .... PLATINUM 608477 .... ALMOND 608493 .... ELECTRIC BLUE 608494 .... INFERNO RED	1
2	6XXXXX***		FRONT COWL, WITH HEADLIGHT OPENING (see colors below) ..... 620227 .... IVORY 620228 .... FORREST GREEN 620229 .... PATRIOT BLUE 620230 .... BLACK 620231 .... MOLTEN RED 620232 .... BRIGHT WHITE 620233 .... FLAME RED 620234 .... STEEL BLUE 608478 .... PLATINUM 608479 .... ALMOND 608516 .... ELECTRIC BLUE 608517 .... INFERNO RED	1
3				
4	600242		INSTRUMENT PANEL TRIM, OPENING FOR KEY SWITCH ONLY .....	1
5	608808		INSTRUMENT PANEL TRIM, OPENING FOR KEY SWITCH & SOC .....	1
6	608864		INSTRUMENT PANEL TRIM, OPENING FOR KEY SW, SOC & LIGHT SW.	1
7	600243		BALL HOLDER INSERT, DRIVER SIDE.....	1
8	600241		BALL HOLDER INSERT, PASSENGER SIDE .....	1
9	602388		ACCESS COVER ASSEMBLY (includes item 10) .....	1
10	602100		U-CLIP .....	3
11				